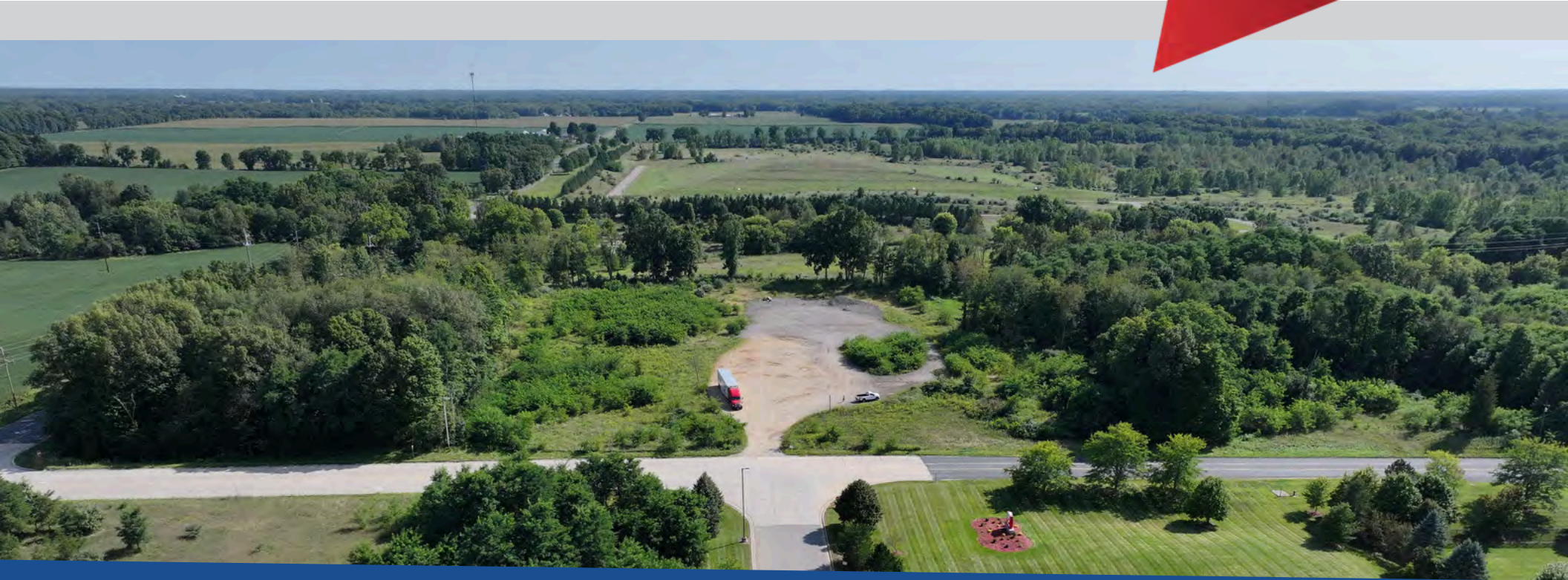
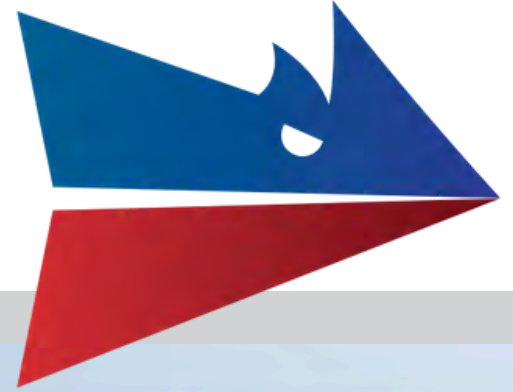


# Available for Lease

12802 E. L Avenue | Galesburg, MI



**CLARK LOGIC** 

**+/- 11.14 ACRES**

**Sarah Huber | Manager of Leasing**

 850.687.4867  [sarah@clarklogic.com](mailto:sarah@clarklogic.com)

**Matt Conlee | Director of Leasing & Development**

 574.333.5344  [matt@clarklogic.com](mailto:matt@clarklogic.com)





## Property Snapshot

Lease	For Lease or Build-to-Suit
Site Area	11.14 Acres
Parcel Number	08-29-226-012
Zoning	Charleston Township; L1 - Light Industrial
Water/Sewer	Municipal water and sewer
2024 SEV	\$73,100
Dimensions	747' x 649' (Irregular)

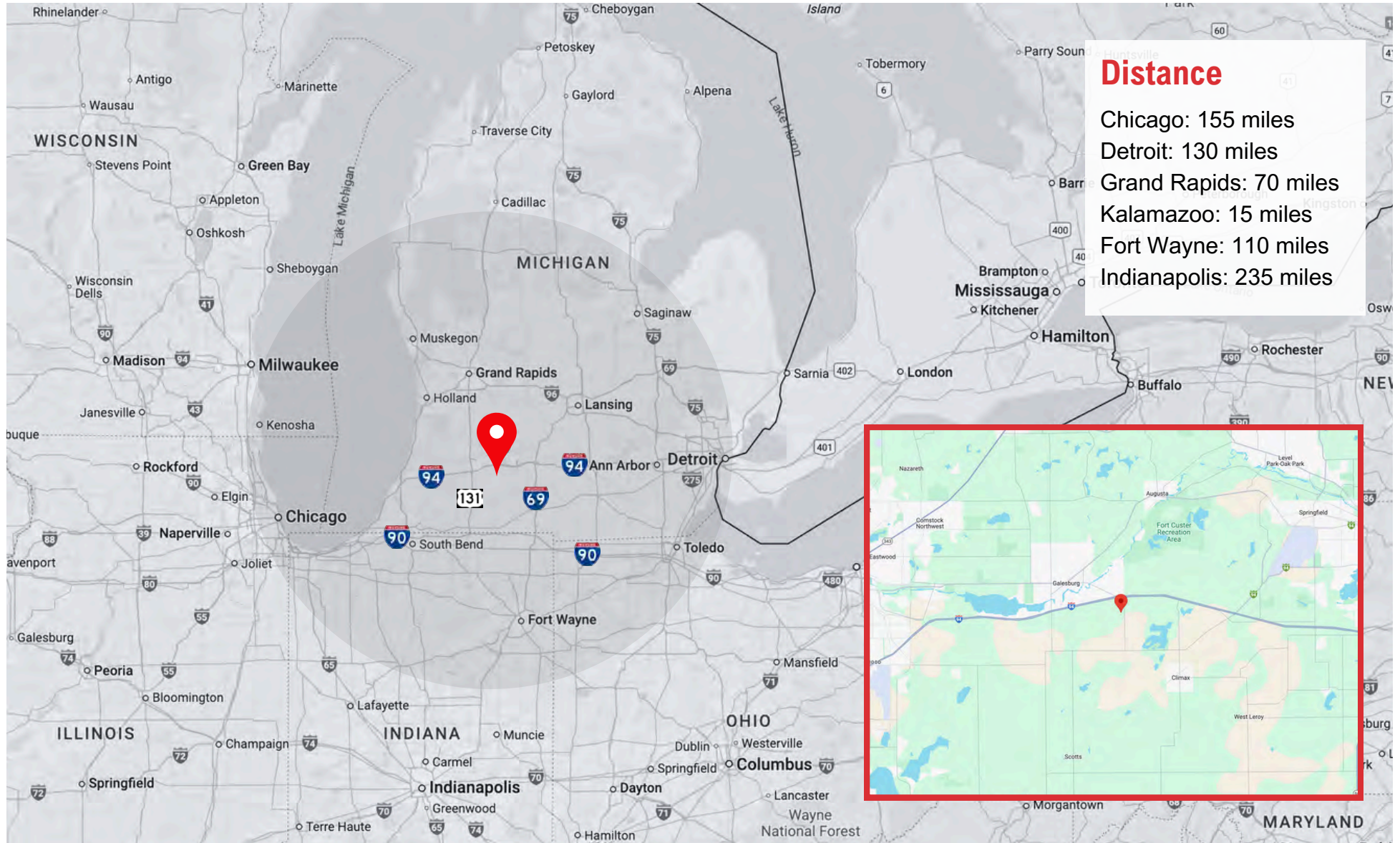
*All information contained herein is deemed reliable but is not guaranteed and is subject to independent verification. No liability is assumed for errors, omissions, or changes in availability or condition.*

## Property Description

This property is located within close proximity to I-94 highway and is centrally located to Kalamazoo and Battle Creek. Build-to-Suit opportunities are available. Lease subject to landlord's approval of tenant's use and credit in its sole discretion. Agents have an ownership interest in the subject property.

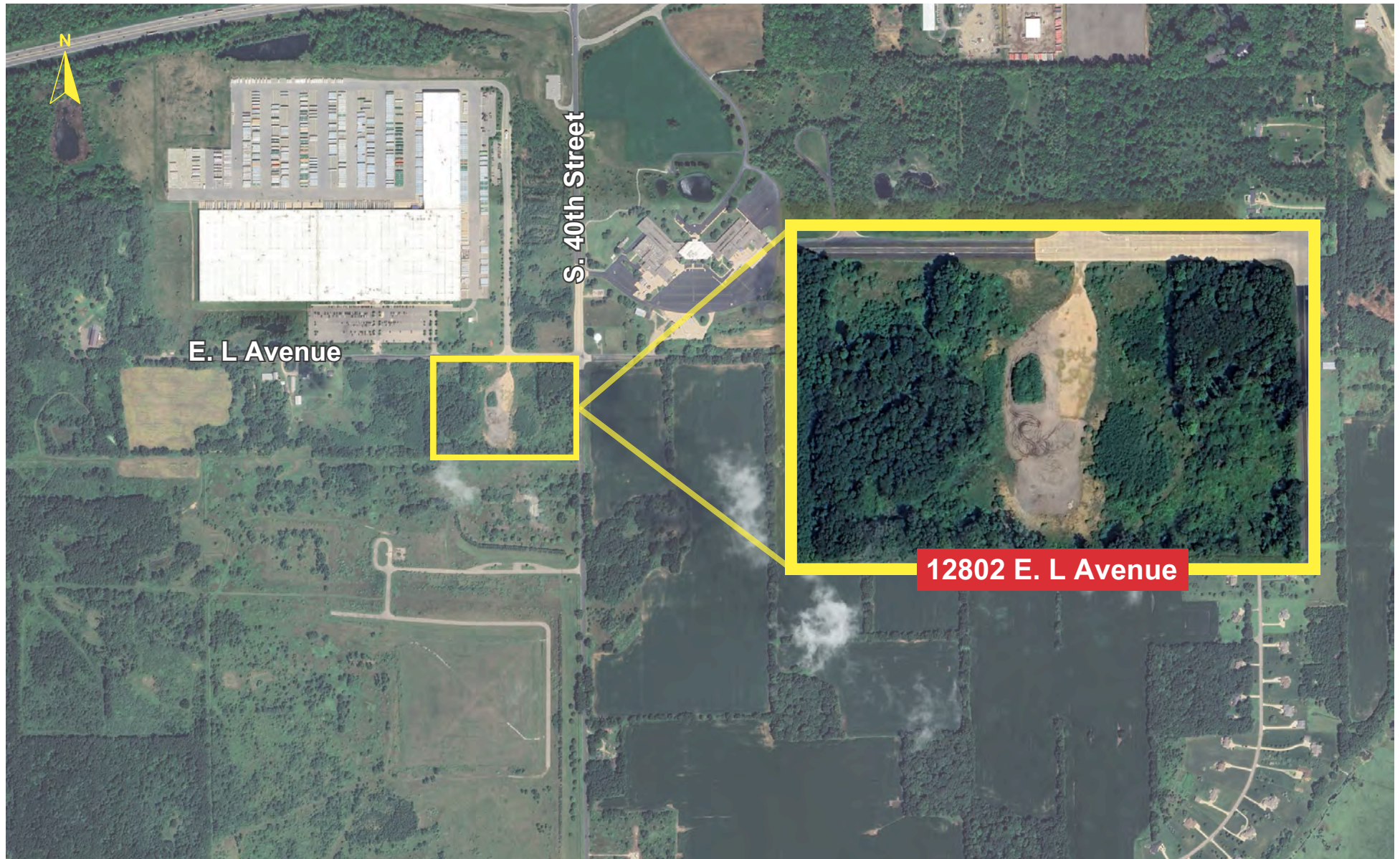


# MAP VIEW





# SITE AERIAL





# OUR FULL RANGE OF SERVICES

- Real Estate & Development
- Transportation & Logistics
- Warehousing Services
- 3PL & Material Handling
- Heavy Machinery Moving & Rigging
- Cardboard, Paper & Pallet Recycling and Sales
- Landscape, Lawn Care & Snow Removal
- Semi Trailer & Container Rental and Sales
- Facility Cleaning
- Automotive Dunnage Washing

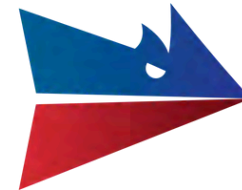


**AUTHORIZED DEALER**

New Trailers, Parts & Service



# CLARK LOGIC



**JAMIE CLARK**

President  
269.207.3081  
jamie@clarklogic.com



**MATT CONLEE**

Director of Leasing & Development  
574.333.5344  
matt@clarklogic.com



**TIM MONAHAN**

Director of Development  
269.861.9487  
tim@clarklogic.com



**SARAH HUBER**

Manager of Leasing  
850.687.4867  
sarah@clarklogic.com

## CORPORATE LOCATIONS

### REAL ESTATE HEADQUARTERS

2314 Helen Avenue  
Portage, MI 49002  
269.323.0717

### MILHAM HEADQUARTERS

3700 E. Milham Avenue  
Portage, MI 49002  
269.279.7405

### KILGORE HEADQUARTERS

3801 E. Kilgore Road  
Kalamazoo, MI 49001  
269.279.7405

