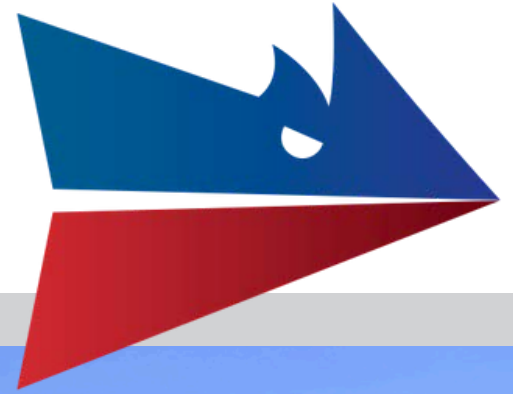


Available for Lease

3737 E. Cork Street | Kalamazoo, MI



CLARK LOGIC 

+/- 12,375 SF

Sarah Huber | Manager of Leasing

 850.687.4867  sarah@clarklogic.com

Matt Conlee | Director of Leasing & Development

 574.333.5344  matt@clarklogic.com



Property Snapshot

Building Size	+/- 12,375 SF
High Bay/Warehouse	+/- 7,386 SF
Low Bay	+/- 4,989
Overhead Doors	12 total, (11 are 14' x 14')
Power	400 amp/3 amp phase
Restrooms	Two (2)
Zoned	Community Commercial

All information contained herein is deemed reliable but is not guaranteed and is subject to independent verification. No liability is assumed for errors, omissions, or changes in availability or condition.

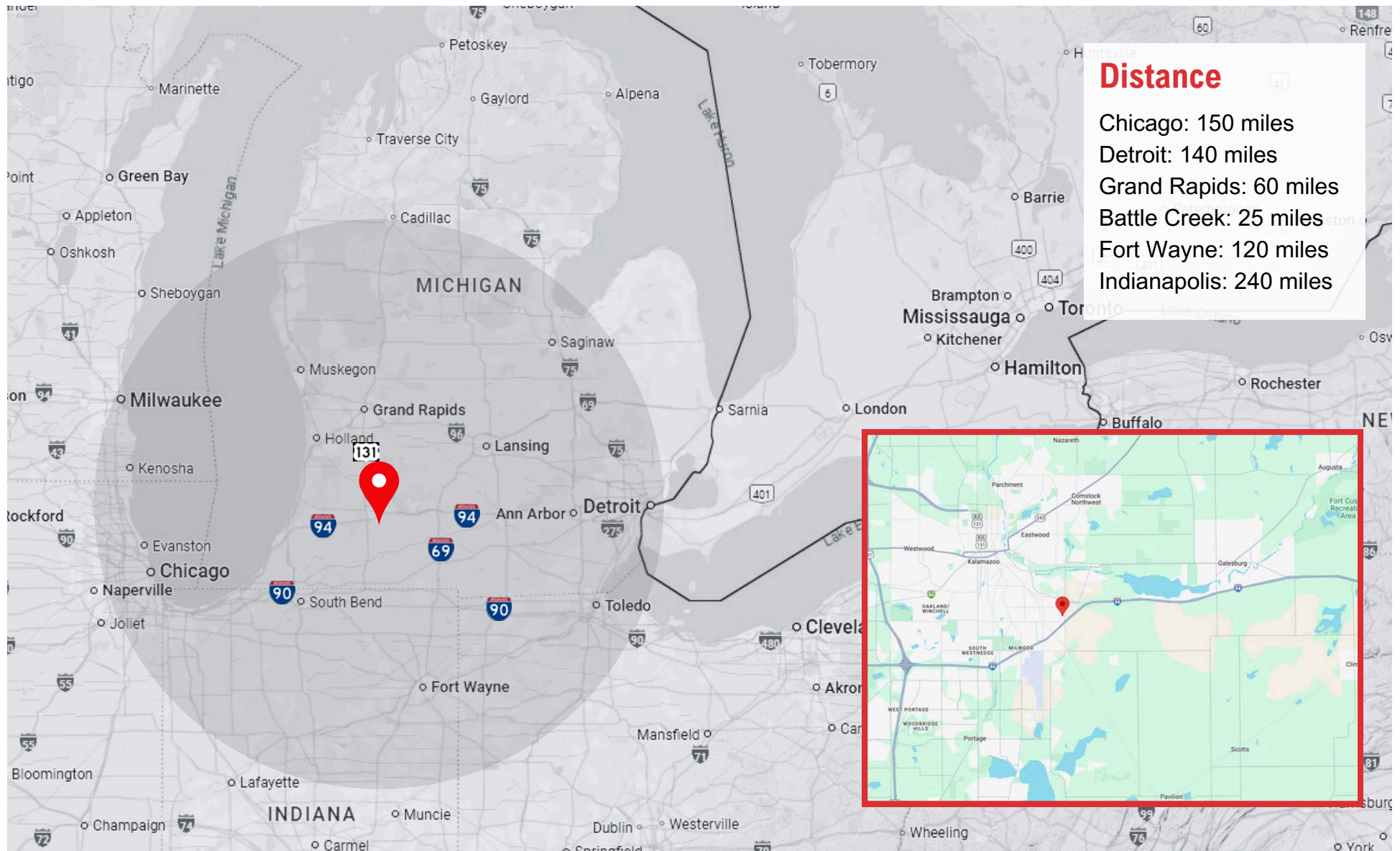
Property Description

This property is located directly off of I-94 with easy on and off access. It is also just minutes away from US-131 and the Kalamazoo/Battle Creek International Airport.

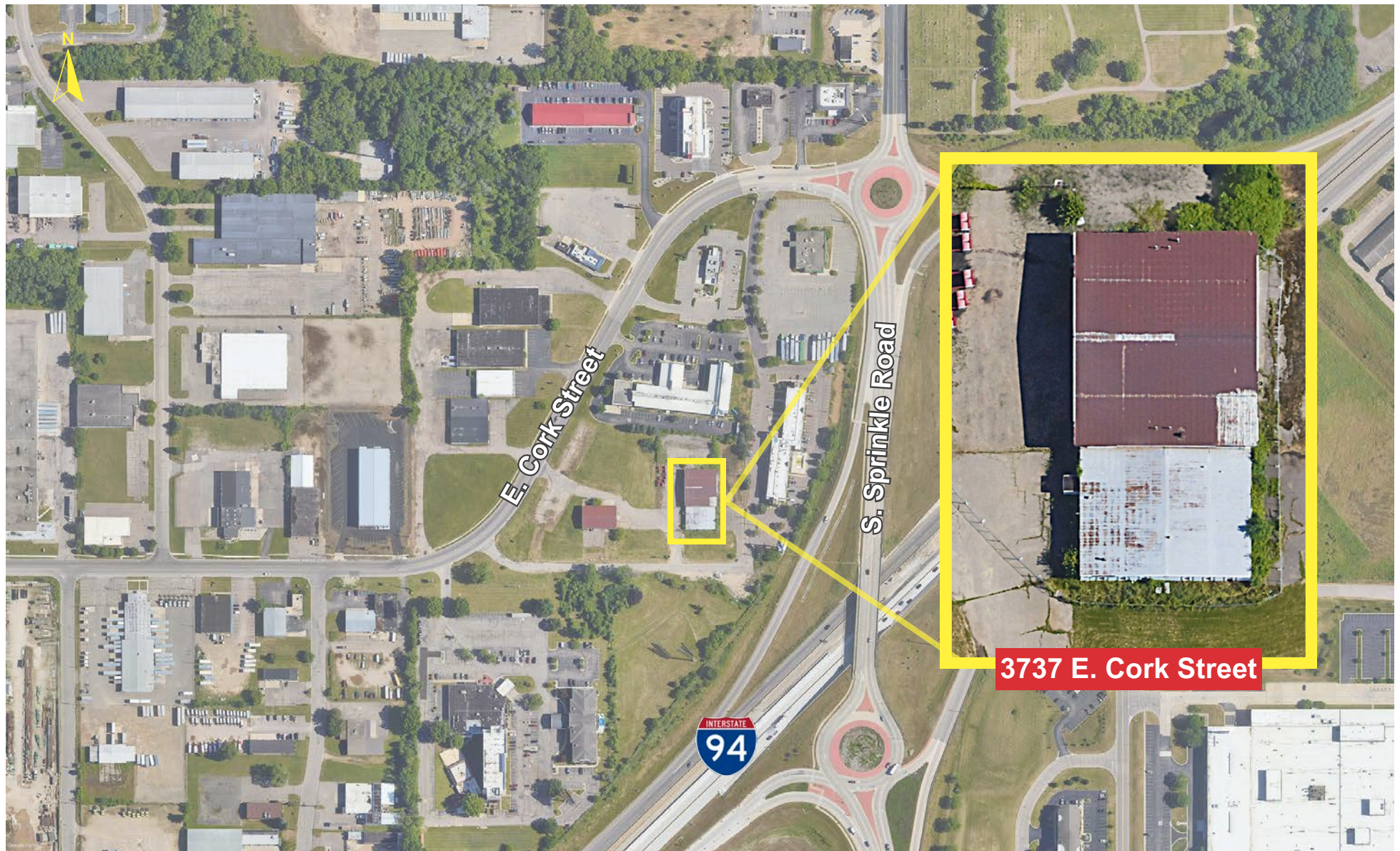
The building features 7,386 SF of warehouse/high bay space and 4,989 SF of low bay/office space. Completed renovations in 2024 include: new roof, overhead doors, interior lining paneling, and exterior cladding. Other improvements include new LED lighting, hanging heat, and ground concrete floors. There are 12 overhead doors, 11 of which are 14'x14' (five on the west side of the building, six on the east).

Clark Logic also owns the front existing building, 3600 E. Cork St. (5,529 SF) as well as the surrounding vacant land, in which approximately 28,000 SF could be built out.

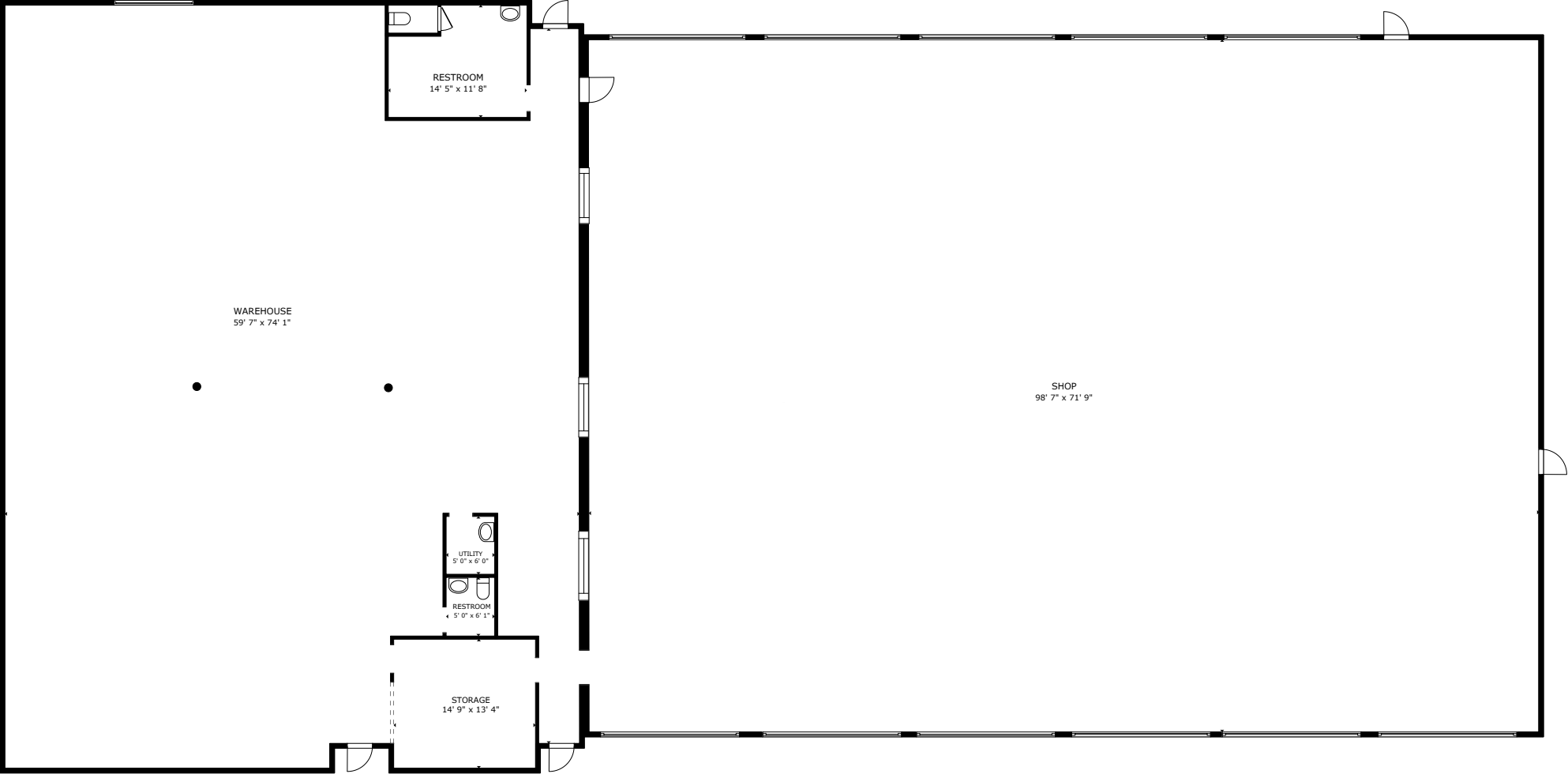
MAP VIEW



SITE AERIAL



FLOOR PLAN



FLOOR PLAN

INTERIOR



OUR FULL RANGE OF SERVICES

- Real Estate & Development
- Transportation & Logistics
- Warehousing Services
- 3PL & Material Handling
- Heavy Machinery Moving & Rigging
- Cardboard, Paper & Pallet Recycling and Sales
- Landscape, Lawn Care & Snow Removal
- Semi Trailer & Container Rental and Sales
- Facility Cleaning
- Automotive Dunnage Washing

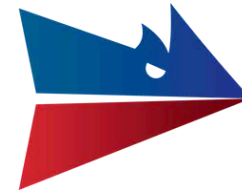


AUTHORIZED DEALER

New Trailers, Parts & Service



CLARK LOGIC



JAMIE CLARK

President
269.207.3081
jamie@clarklogic.com



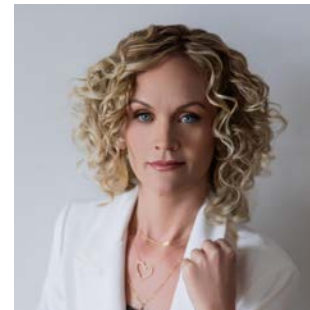
MATT CONLEE

Director of Leasing & Development
574.333.5344
matt@clarklogic.com



TIM MONAHAN

Director of Development
269.861.9487
tim@clarklogic.com



SARAH HUBER

Manager of Leasing
850.687.4867
sarah@clarklogic.com

CORPORATE LOCATIONS

REAL ESTATE HEADQUARTERS

2314 Helen Avenue
Portage, MI 49002
269.323.0717

MILHAM HEADQUARTERS

3700 E. Milham Avenue
Portage, MI 49002
269.279.7405

KILGORE HEADQUARTERS

3801 E. Kilgore Road
Kalamazoo, MI 49001
269.279.7405

