

Available for Lease

5251 Wayne Road | Battle Creek, MI



CLARK LOGIC 

+/- 4,963 SF

Sarah Huber | Manager of Leasing

 850.687.4867  sarah@clarklogic.com

Matt Conlee | Director of Leasing & Development

 574.333.5344  matt@clarklogic.com



Property Snapshot

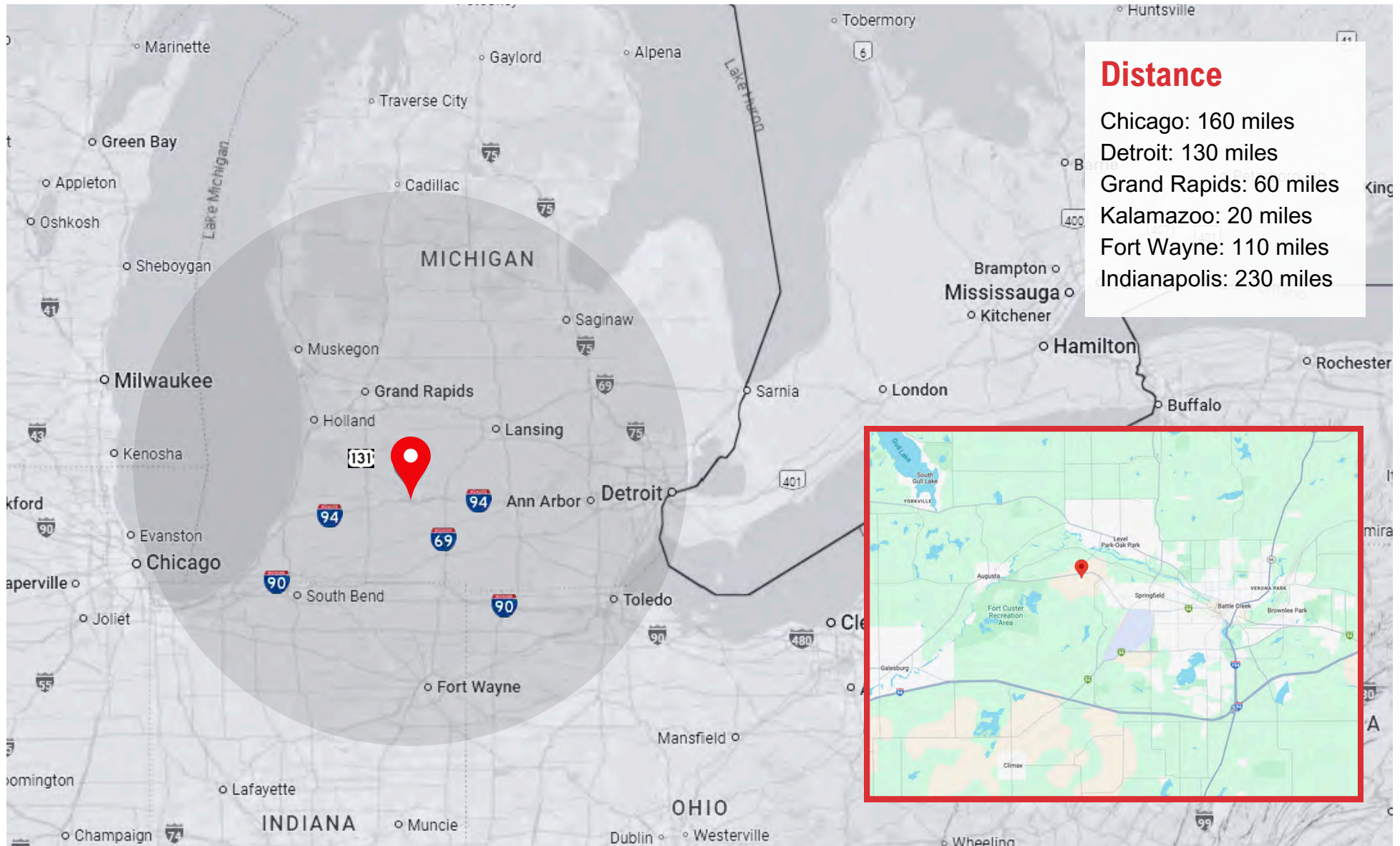
County	Calhoun
Municipality	Battle Creek
Available for Lease	4,963 SF
Buildings/Units	1 Building / 1 Unit
Building Levels	1 Level
Recommended Use	Office / Industrial
Zoning Code/Description	I-2 / Heavy Industrial
Between Streets	Wayne and Clark
Street Type	Paved Public
Construction	Brick / Concrete
Exterior	Brick
Substructure	Concrete
Parking Type	Asphalt
Utilities Available	All Public Utilities

All information contained herein is deemed reliable but is not guaranteed and is subject to independent verification. No liability is assumed for errors, omissions, or changes in availability or condition.

Property Description

Excellent opportunity for small office users to rent by the room from 120sf - 5,000sf located in Fort Custer Industrial Park. In addition, the suites can be used for climate-controlled storage from 120 SF -5,000 sf. They are fully heated and cooled with all utilities included in the rent! A 120-sf suite leases for as little as \$70 a month! Very Secure!

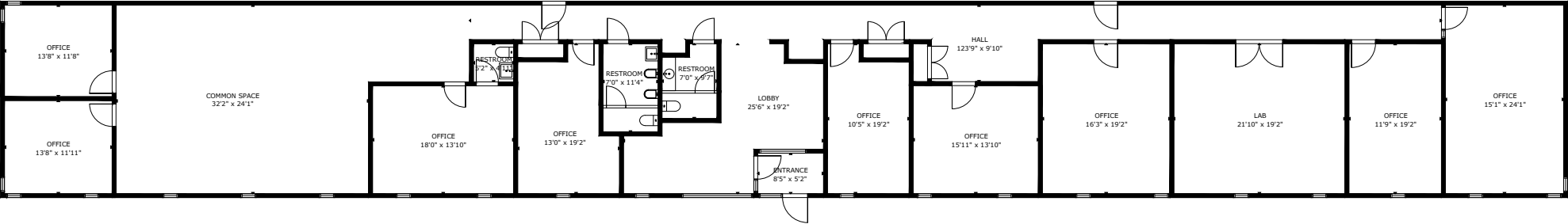
MAP VIEW



SITE AERIAL



FLOOR PLAN



INTERIOR



OUR FULL RANGE OF SERVICES

- Real Estate & Development
- Transportation & Logistics
- Warehousing Services
- 3PL & Material Handling
- Heavy Machinery Moving & Rigging
- Cardboard, Paper & Pallet Recycling and Sales
- Landscape, Lawn Care & Snow Removal
- Semi Trailer & Container Rental and Sales
- Facility Cleaning
- Automotive Dunnage Washing

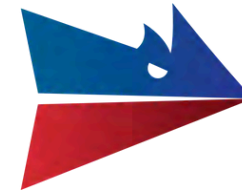


AUTHORIZED DEALER

New Trailers, Parts & Service



CLARK LOGIC



JAMIE CLARK

President
269.207.3081
jamie@clarklogic.com



MATT CONLEE

Director of Leasing & Development
574.333.5344
matt@clarklogic.com



TIM MONAHAN

Director of Development
269.861.9487
tim@clarklogic.com



SARAH HUBER

Manager of Leasing
850.687.4867
sarah@clarklogic.com

CORPORATE LOCATIONS

REAL ESTATE HEADQUARTERS

2314 Helen Avenue
Portage, MI 49002
269.323.0717

MILHAM HEADQUARTERS

3700 E. Milham Avenue
Portage, MI 49002
269.279.7405

KILGORE HEADQUARTERS

3801 E. Kilgore Road
Kalamazoo, MI 49001
269.279.7405

