

Available for Lease

5575 Collingwood Avenue | Kalamazoo, MI



CLARK LOGIC

+/- 30,754 SF

Sarah Huber | Manager of Leasing

850.687.4867 sarah@clarklogic.com

Matt Conlee | Director of Leasing & Development

574.333.5344 matt@clarklogic.com



Property Snapshot

Structure Size	+/- 30,754
Floors	One (1)
Year Built	1971
Construction	Block
Roof	Flat
Floors	6" reinforced concrete
Loading Docks	Two (2)
Overhead Doors	One (1)
Ceiling Height	10' to 14'
Electrical	3-phase, 800 amps
Air Conditioned	Yes; partially (approx. 15,000 SF)

All information contained herein is deemed reliable but is not guaranteed and is subject to independent verification. No liability is assumed for errors, omissions, or changes in availability or condition.

Property Description

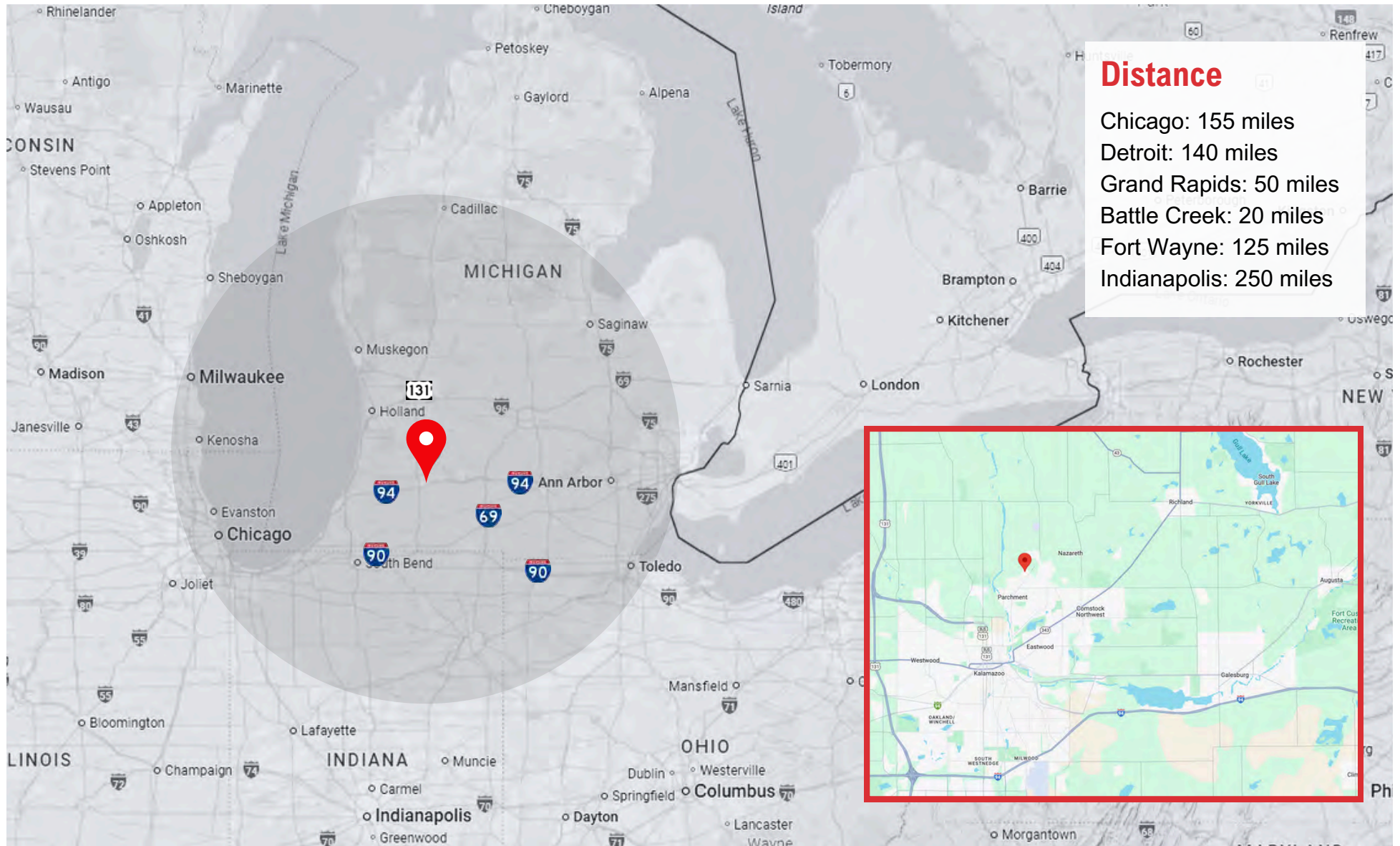
Positioned on 9.56 acres and zoned I-3, this versatile 30,754 SF warehouse/light manufacturing facility offers both functionality and room to grow. The property features two loading docks, one overhead door, and 3-phase power—ideal for handling shipments and supporting production needs. Air compressors and a partially cooled manufacturing area further enhance operational efficiency.

An executive office area is available and can be built to suit, offering flexibility to meet tenant or owner-specific needs.

Recent 2024 upgrades include new concrete and fresh interior and exterior paint, ensuring a clean, well-maintained environment for immediate use.

A solid option for businesses seeking space in the Kalamazoo industrial market.

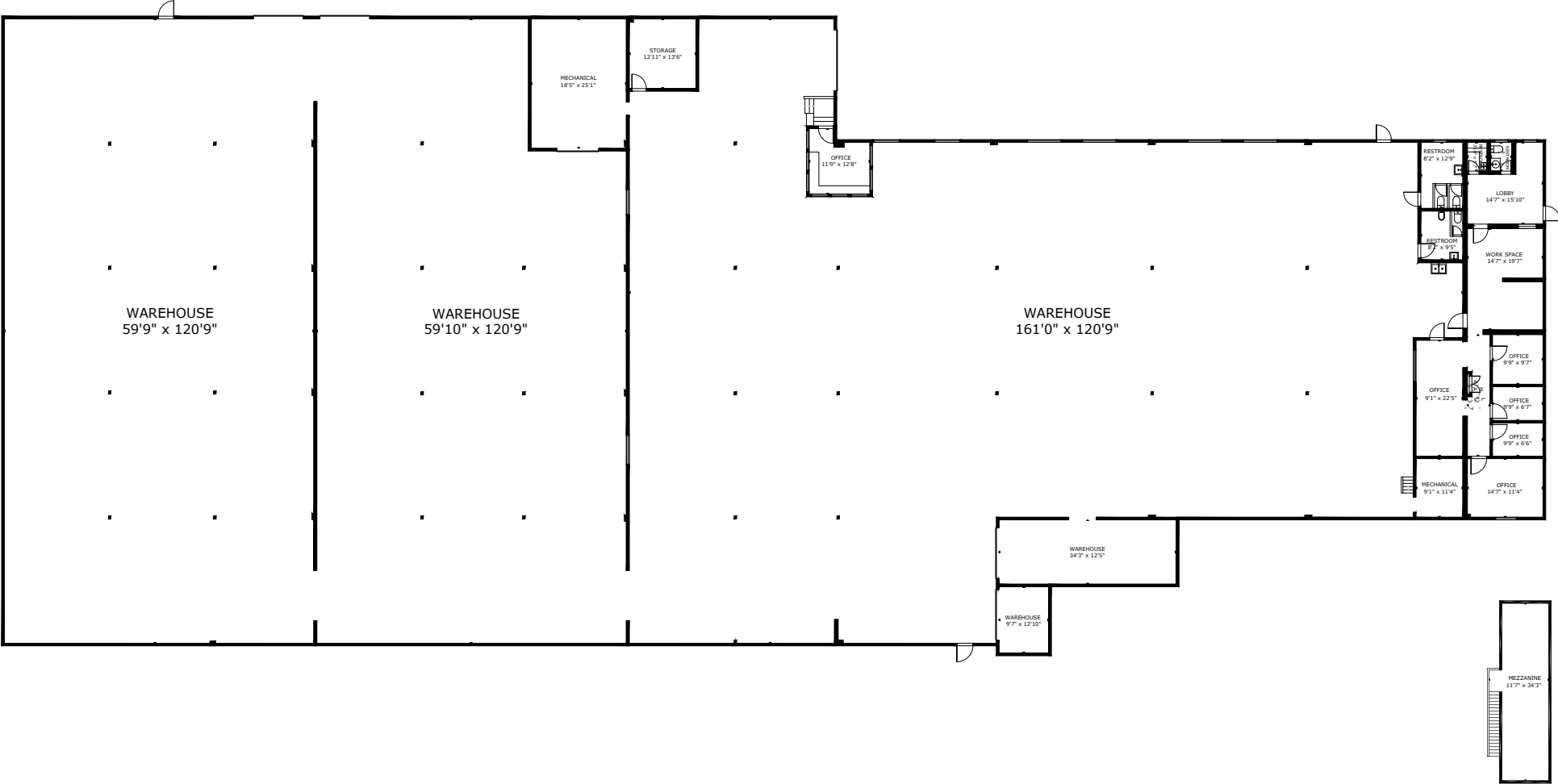
MAP VIEW



SITE AERIAL



FLOOR PLAN



EXTERIOR



INTERIOR



OUR FULL RANGE OF SERVICES

- Real Estate & Development
- Transportation & Logistics
- Warehousing Services
- 3PL & Material Handling
- Heavy Machinery Moving & Rigging
- Cardboard, Paper & Pallet Recycling and Sales
- Landscape, Lawn Care & Snow Removal
- Semi Trailer & Container Rental and Sales
- Facility Cleaning
- Automotive Dunnage Washing

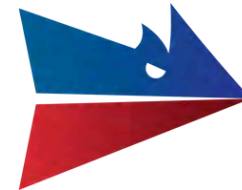


AUTHORIZED DEALER

New Trailers, Parts & Service



CLARK LOGIC



JAMIE CLARK

President
269.207.3081
jamie@clarklogic.com



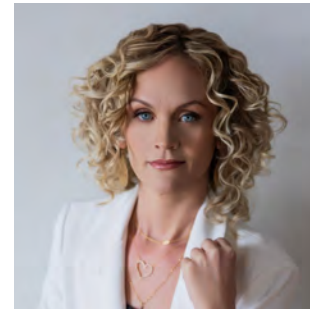
MATT CONLEE

Director of Leasing & Development
574.333.5344
matt@clarklogic.com



TIM MONAHAN

Director of Development
269.861.9487
tim@clarklogic.com



SARAH HUBER

Manager of Leasing
850.687.4867
sarah@clarklogic.com

CORPORATE LOCATIONS

REAL ESTATE HEADQUARTERS

2314 Helen Avenue
Portage, MI 49002
269.323.0717

MILHAM HEADQUARTERS

3700 E. Milham Avenue
Portage, MI 49002
269.279.7405

KILGORE HEADQUARTERS

3801 E. Kilgore Road
Kalamazoo, MI 49001
269.279.7405

