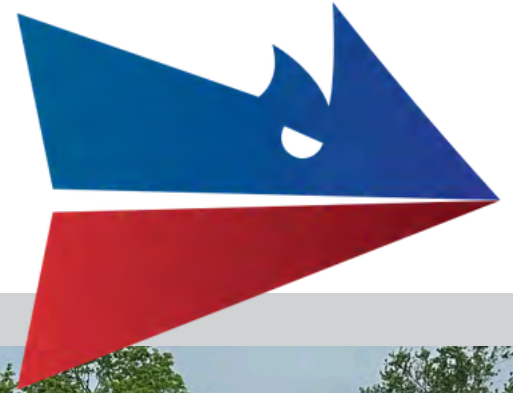


# Available for Lease

5252 Portage Road | Portage, MI



**CLARK LOGIC** 

**+/- 3,039 SF**

**Sarah Huber | Manager of Leasing**

 850.687.4867  [sarah@clarklogic.com](mailto:sarah@clarklogic.com)

**Matt Conlee | Director of Leasing & Development**

 574.333.5344  [matt@clarklogic.com](mailto:matt@clarklogic.com)



## Property Snapshot

Total Building Size	+/- 6,500 SF
Total Available Space	+/- 3,039 SF
Suite C	+/- 1,647 SF
Suite D	+/- 1,392 SF
Roof	New - 2023
Ceiling Height	12 feet
Parking	Approx. 40 spaces
Year Built	1967
Major Renovations	2024, 2003
Property Type	Commercial/Retail
Zoning	B-3
Utilities	Electric/Gas/Water/Sewer

*All information contained herein is deemed reliable but is not guaranteed and is subject to independent verification. No liability is assumed for errors, omissions, or changes in availability or condition.*

## Property Description

Suites C and D are now available for lease—offered separately or together—providing flexible options to meet your business needs.

The building has undergone extensive upgrades, including a new roof, sidewalks, and a refreshed exterior façade, offering a professional and updated presence.

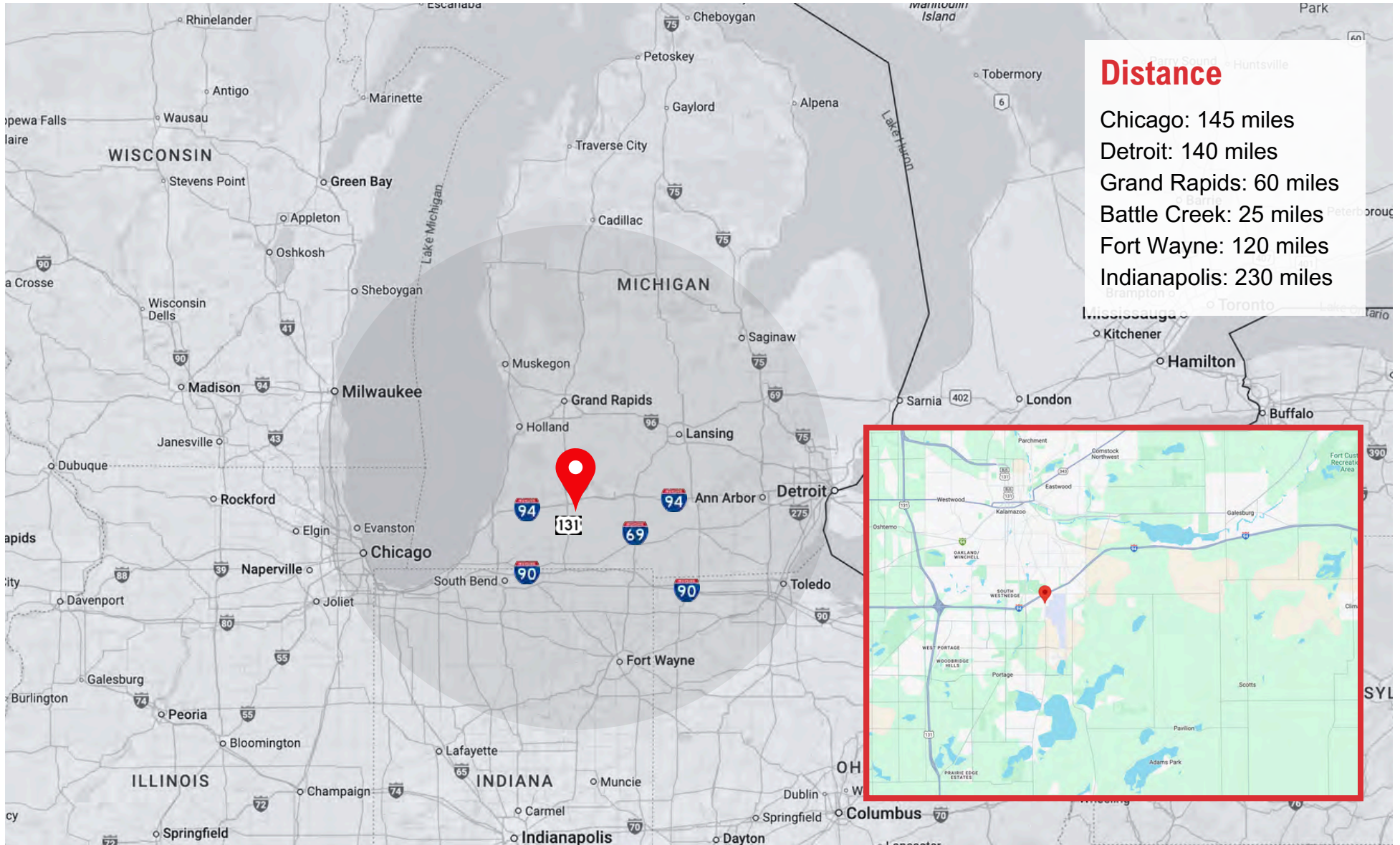
Both spaces are currently in a “vanilla box” condition, providing a clean slate ready for your customization—perfect for a wide range of commercial uses.

### Location Highlights:

- Ideally situated on Portage Road, between Kalamazoo/Battle Creek International Airport and I-94
- High traffic counts and strong visibility
- Close proximity to major employers including Stryker, Pfizer, Zoetis, and Mann+Hummel

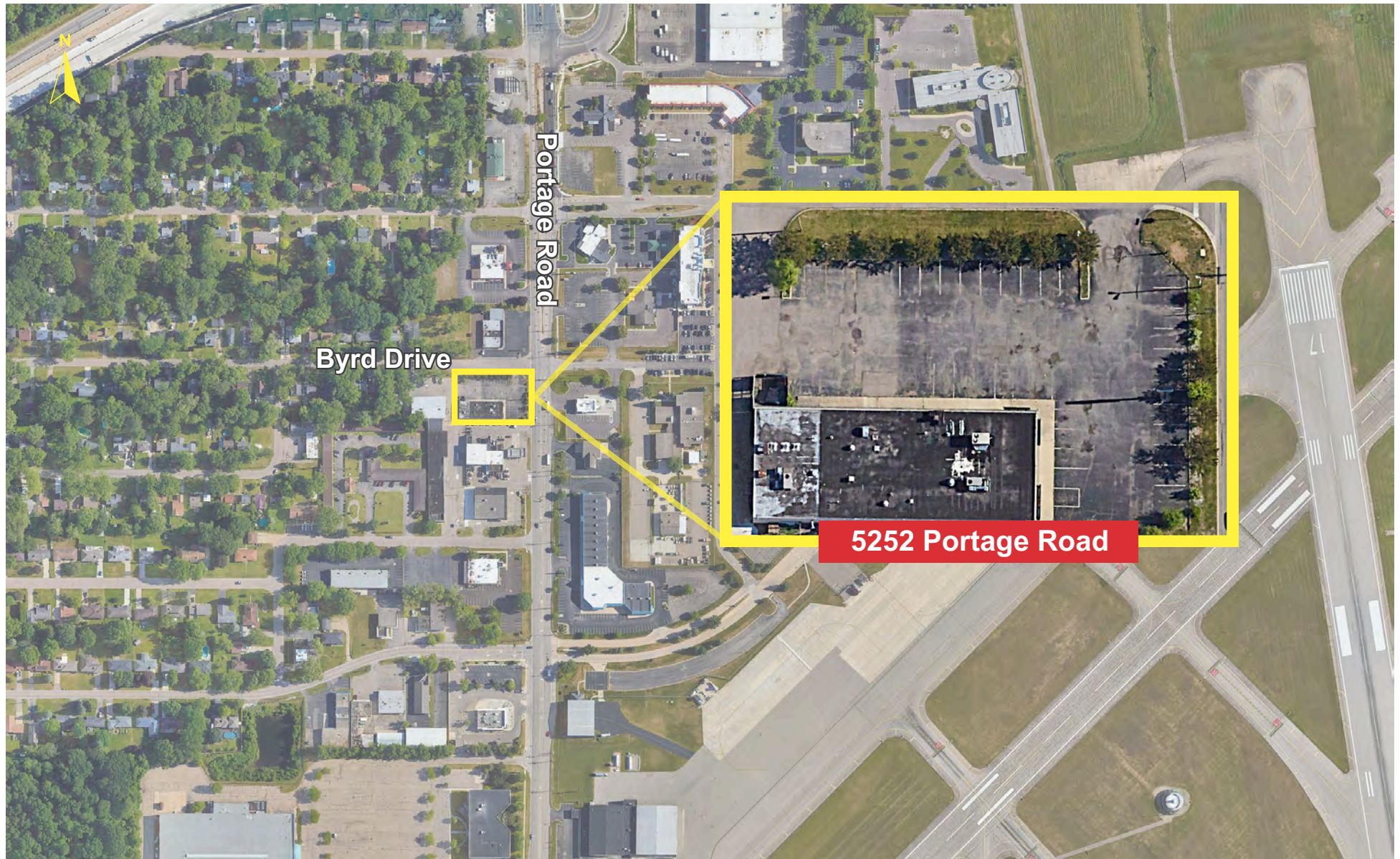


# MAP VIEW

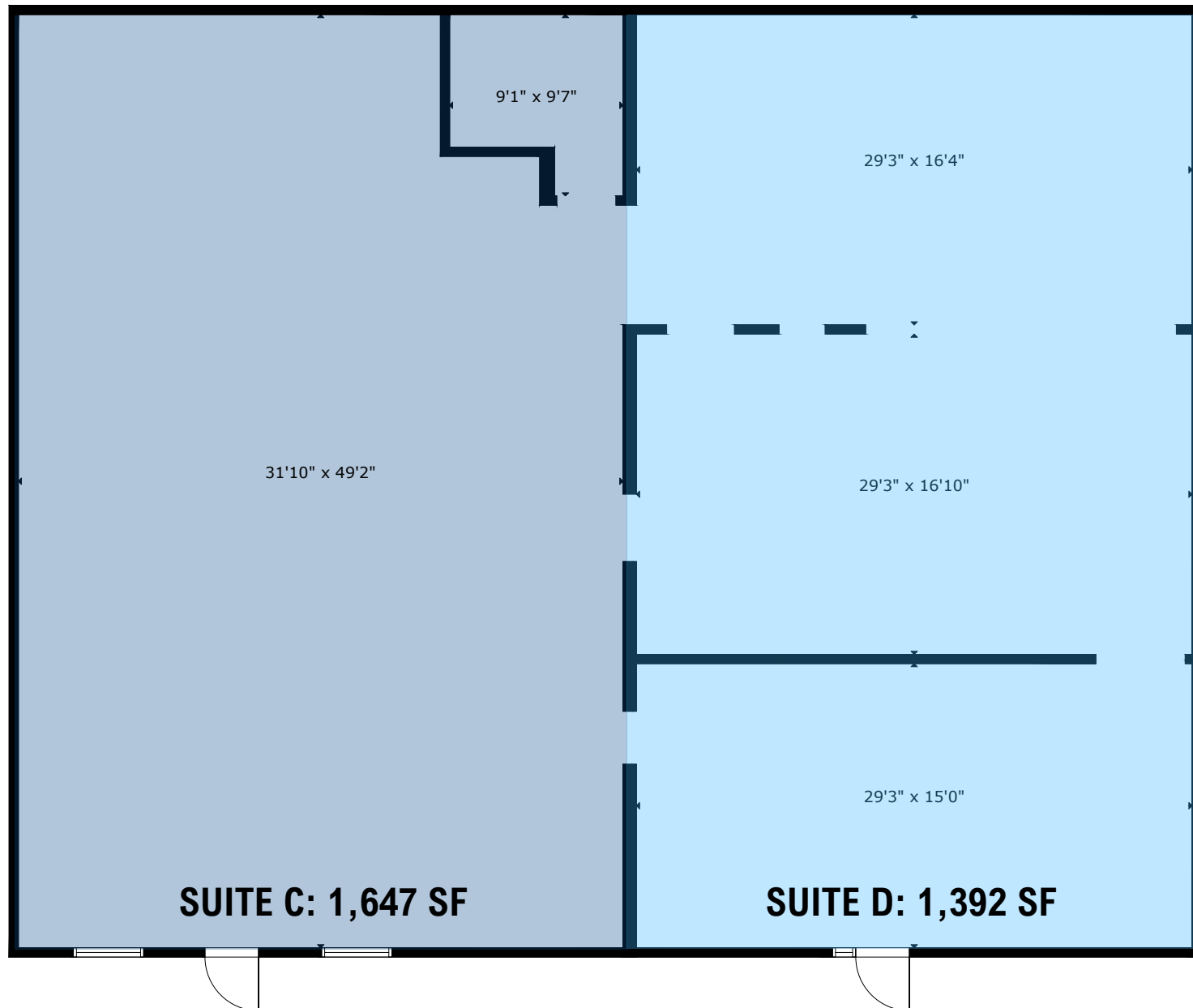




# SITE AERIAL



# FLOOR PLAN





# EXTERIOR

---





# INTERIOR

---





# OUR FULL RANGE OF SERVICES

- Real Estate & Development
- Transportation & Logistics
- Warehousing Services
- 3PL & Material Handling
- Heavy Machinery Moving & Rigging
- Cardboard, Paper & Pallet Recycling and Sales
- Landscape, Lawn Care & Snow Removal
- Semi Trailer & Container Rental and Sales
- Facility Cleaning
- Automotive Dunnage Washing



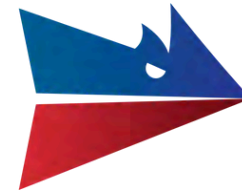
**AUTHORIZED DEALER**

New Trailers, Parts & Service





# CLARK LOGIC



**JAMIE CLARK**

President  
269.207.3081  
jamie@clarklogic.com



**MATT CONLEE**

Director of Leasing & Development  
574.333.5344  
matt@clarklogic.com



**TIM MONAHAN**

Director of Development  
269.861.9487  
tim@clarklogic.com



**SARAH HUBER**

Manager of Leasing  
850.687.4867  
sarah@clarklogic.com

## CORPORATE LOCATIONS

### REAL ESTATE HEADQUARTERS

2314 Helen Avenue  
Portage, MI 49002  
269.323.0717

### MILHAM HEADQUARTERS

3700 E. Milham Avenue  
Portage, MI 49002  
269.279.7405

### KILGORE HEADQUARTERS

3801 E. Kilgore Road  
Kalamazoo, MI 49001  
269.279.7405

