

Available for Lease

5501 - 5515 King Highway | Kalamazoo, MI



CLARK LOGIC 

+/- 17,467 SF

Sarah Huber | Manager of Leasing

 850.687.4867  sarah@clarklogic.com

Matt Conlee | Director of Leasing & Development

 574.333.5344  matt@clarklogic.com



Property Snapshot

Total SF (all buildings)	+/- 17,467 SF
# of Buildings	Three (3) Buildings Total Quinset
5501 SF	+/- 3,450 SF
5515 SF	+/- 7,036 SF
Warehouse SF	+/- 5,889 SF
Zoning	Comstock Charter Twp.; M-Manufacturing
Auto Trailer Parking	On Site
Construction Type	Brick/Metal Siding
Stories	One
Restroom(s)	Yes; Common Areas
Site Fencing	Yes
Sewer/Water	Public/Public

All information contained herein is deemed reliable but is not guaranteed and is subject to independent verification. No liability is assumed for errors, omissions, or changes in availability or condition.

Property Description

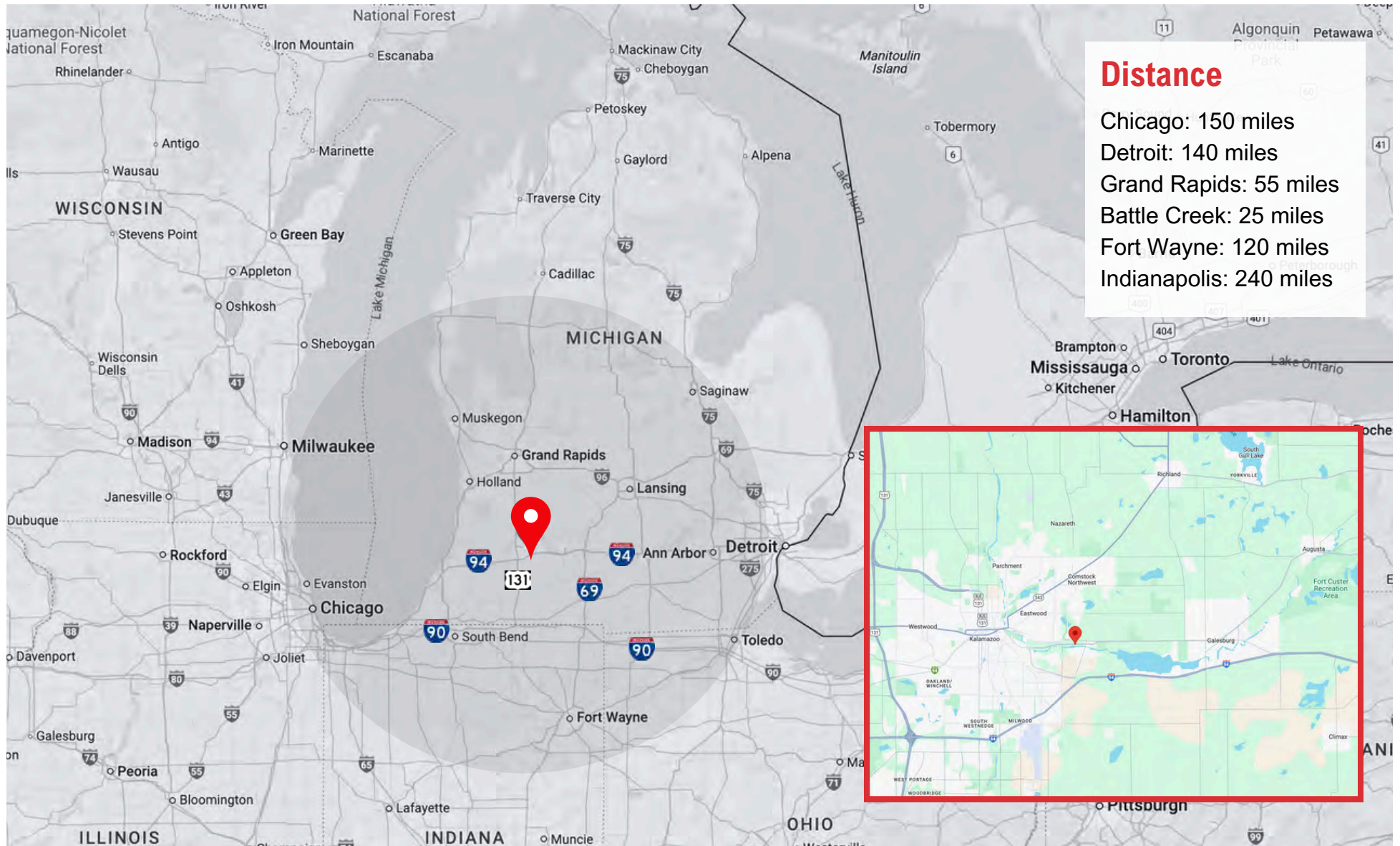
This 17,467 SF industrial property features three buildings and is ideally located on King Highway, just minutes from Business 94 and downtown Kalamazoo.

Zoned M–Manufacturing in Comstock Charter Township, the property is well-suited for a variety of industrial or light manufacturing uses. The site includes pull-through bays, grade-level overhead doors, and one dock, with the option to lease buildings individually.

The two front buildings offer a practical combination of administrative office space and maintenance shop areas, providing flexible layouts to accommodate a range of operational needs.

The property sits on 1.936 acres and includes a fenced-in storage area, offering secure parking or material storage.

MAP VIEW



SITE AERIAL



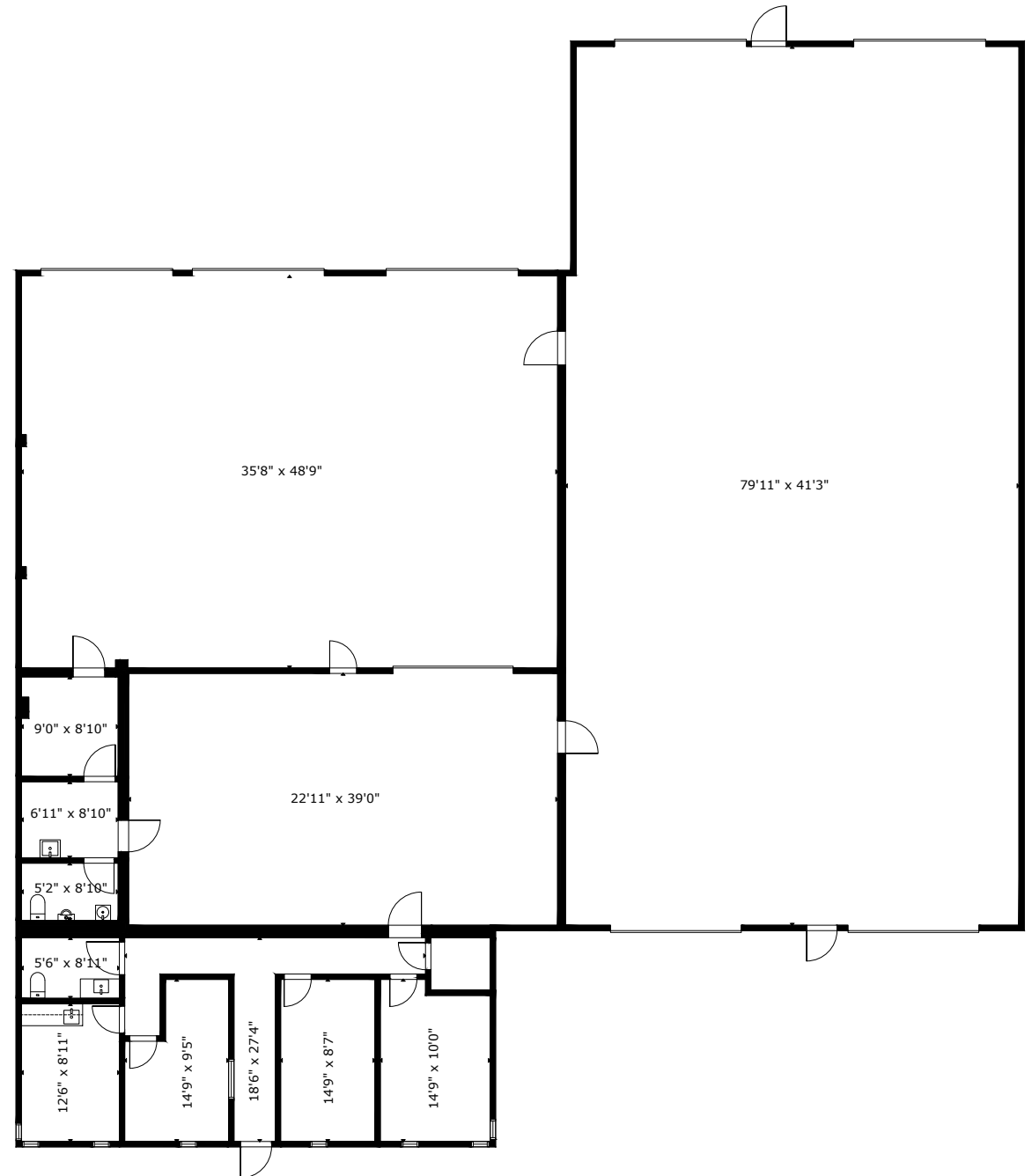
5515 FLOOR PLAN



BACK (NORTH SIDE)



SOUTH SIDE (FRONT)



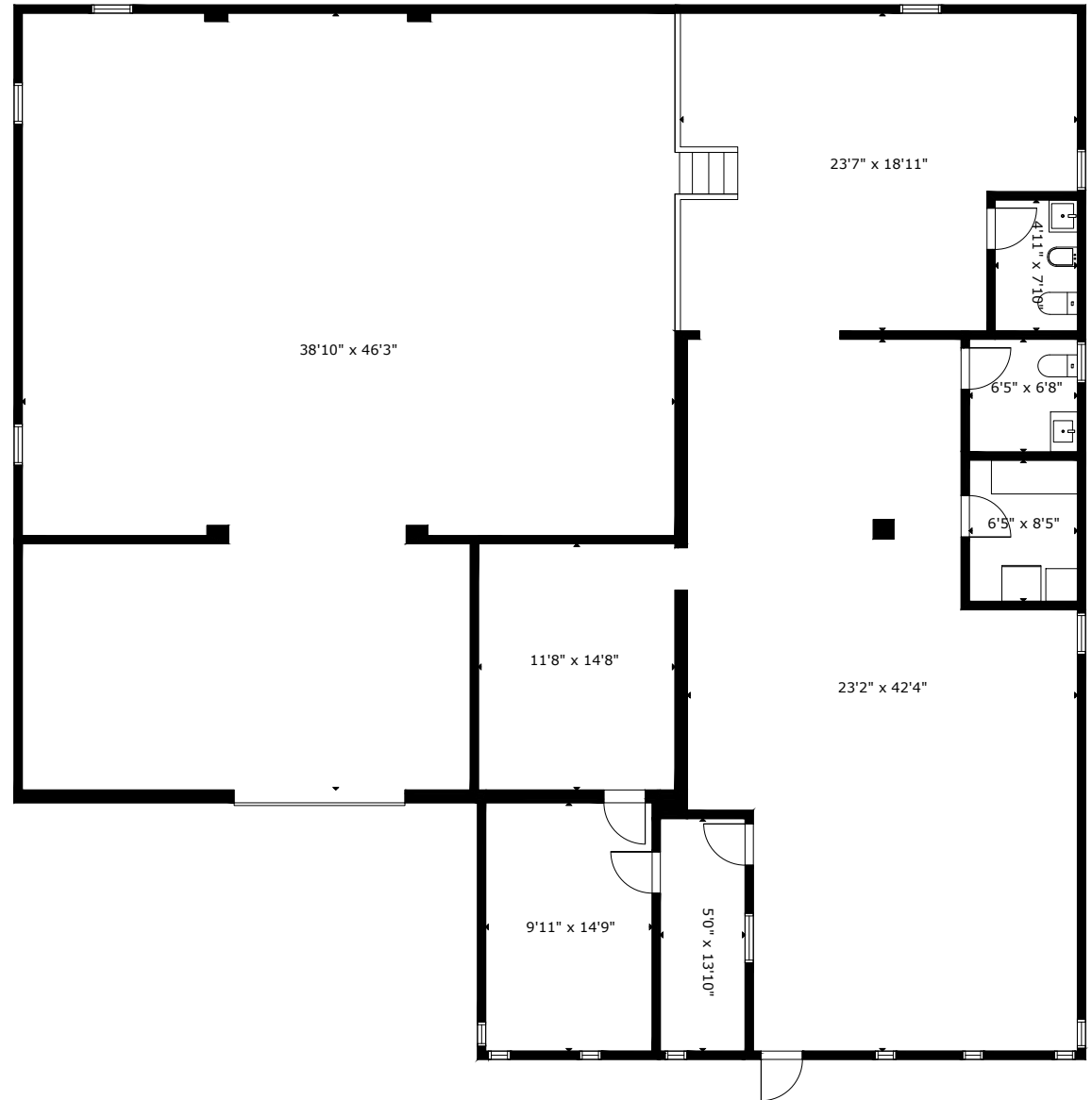
5501 FLOOR PLAN



NORTH SIDE (BACK)



SOUTH SIDE (FRONT)



WAREHOUSE FLOOR PLAN



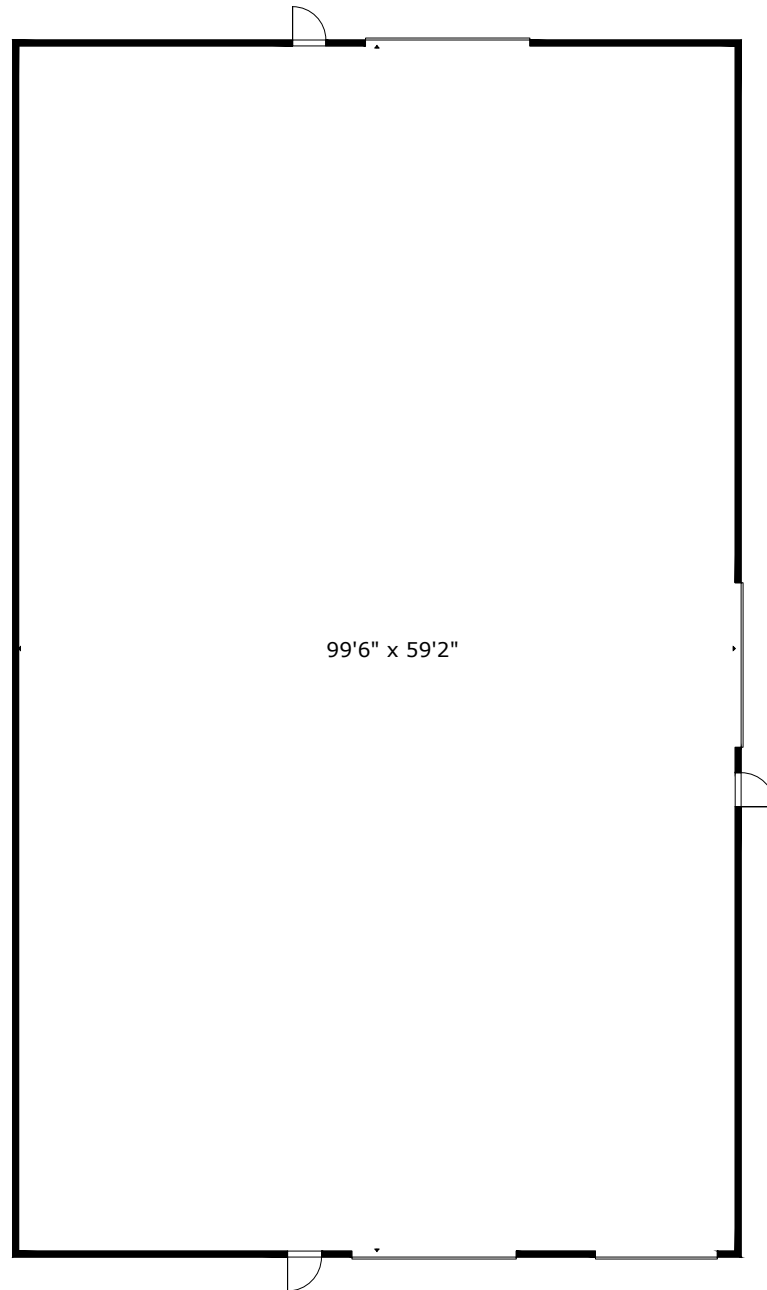
SOUTH SIDE (FRONT)



EAST SIDE



NORTH SIDE (BACK)



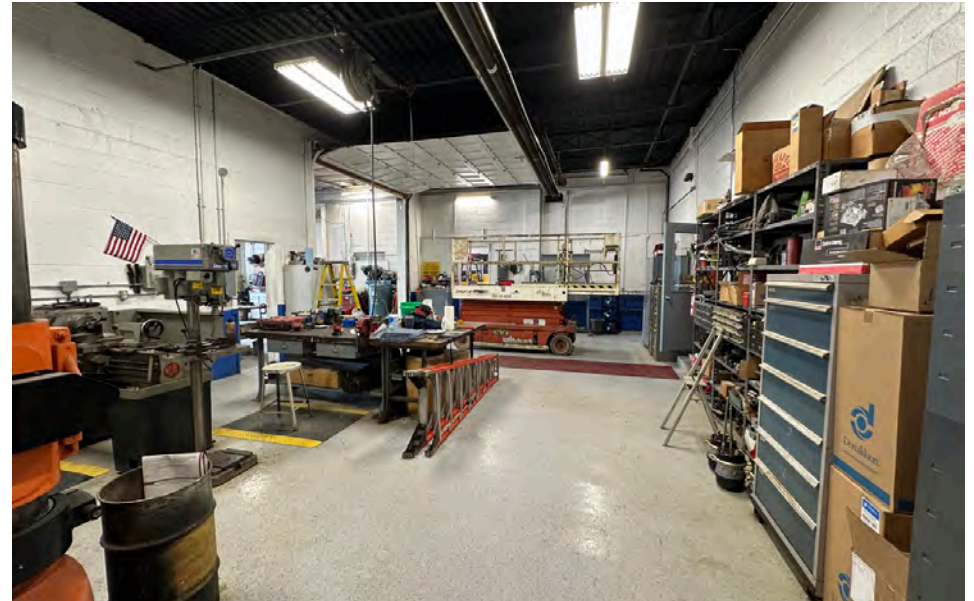
SITE PHOTOS



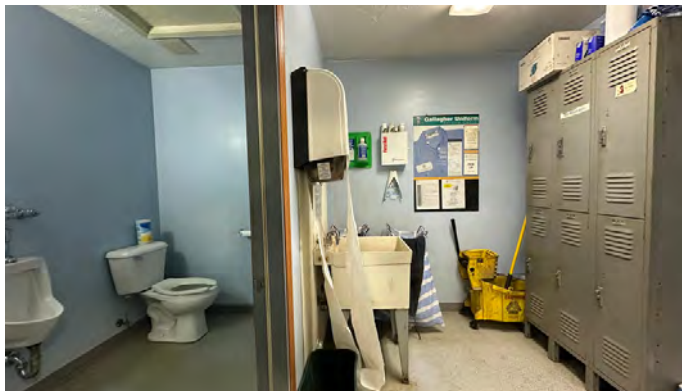
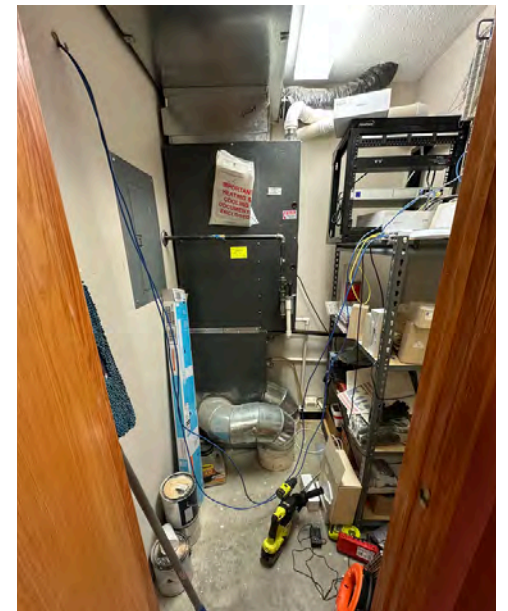
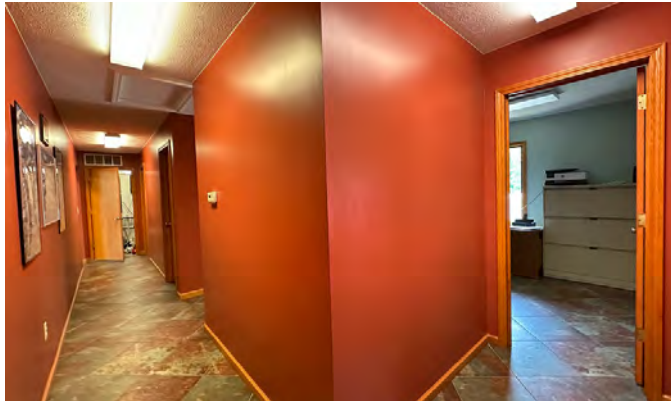
5515 PHOTOS



5515 PHOTOS



5515 PHOTOS



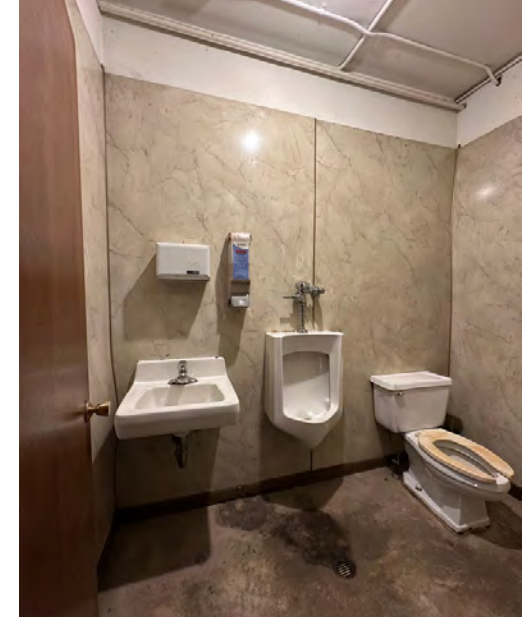
5501 PHOTOS



5501 PHOTOS



5501 PHOTOS



WAREHOUSE PHOTOS



OUR FULL RANGE OF SERVICES

- Real Estate & Development
- Transportation & Logistics
- Warehousing Services
- 3PL & Material Handling
- Heavy Machinery Moving & Rigging
- Cardboard, Paper & Pallet Recycling and Sales
- Landscape, Lawn Care & Snow Removal
- Semi Trailer & Container Rental and Sales
- Facility Cleaning
- Automotive Dunnage Washing

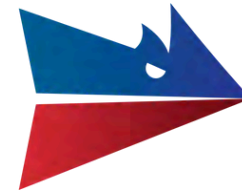


AUTHORIZED DEALER

New Trailers, Parts & Service



CLARK LOGIC



JAMIE CLARK

President
269.207.3081
jamie@clarklogic.com



MATT CONLEE

Director of Leasing & Development
574.333.5344
matt@clarklogic.com



TIM MONAHAN

Director of Development
269.861.9487
tim@clarklogic.com



SARAH HUBER

Manager of Leasing
850.687.4867
sarah@clarklogic.com

CORPORATE LOCATIONS

REAL ESTATE HEADQUARTERS

2314 Helen Avenue
Portage, MI 49002
269.323.0717

MILHAM HEADQUARTERS

3700 E. Milham Avenue
Portage, MI 49002
269.279.7405

KILGORE HEADQUARTERS

3801 E. Kilgore Road
Kalamazoo, MI 49001
269.279.7405

