

Available for Lease

1103 W. Michigan Avenue | Three Rivers, MI



CLARK LOGIC 

+/- 4,183 SF

Sarah Huber | Manager of Leasing

 850.687.4867  sarah@clarklogic.com

Matt Conlee | Director of Leasing & Development

 574.333.5344  matt@clarklogic.com



Property Snapshot

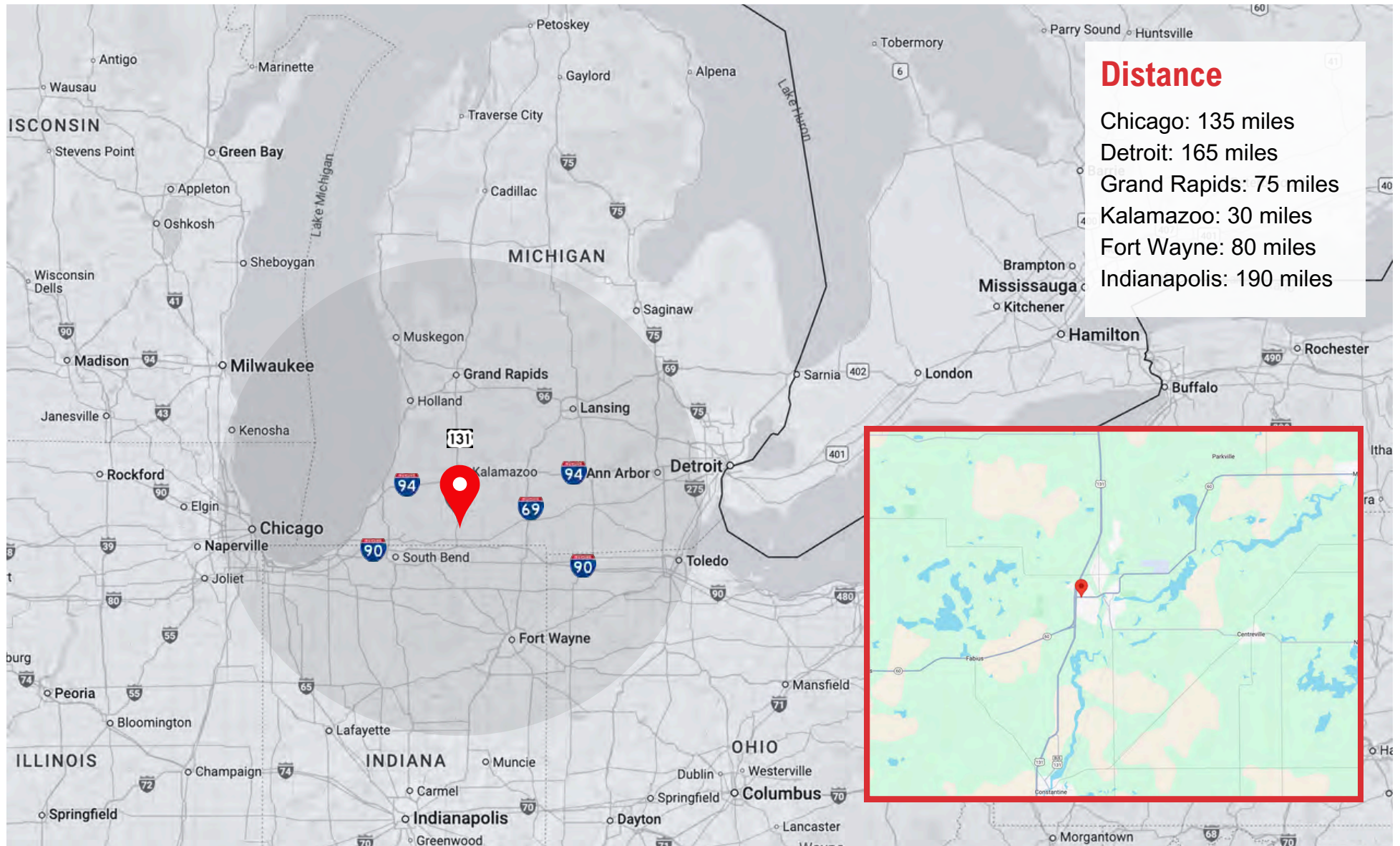
Building Size	+/- 4,183
Year Built	1950
Construction	Pole/Wood
Floors	One (1)
HVAC	Forced
Water/Sewer	Public
Air Conditioning	Central
Lot Dimensions	107.25 x 202.76
Road Frontage	107.25
Acreage	+/- 0.499
Number of Buildings	Two (2)
Municipality	City of Three Rivers
Zoning	B-2
Building Class	C

All information contained herein is deemed reliable but is not guaranteed and is subject to independent verification. No liability is assumed for errors, omissions, or changes in availability or condition.

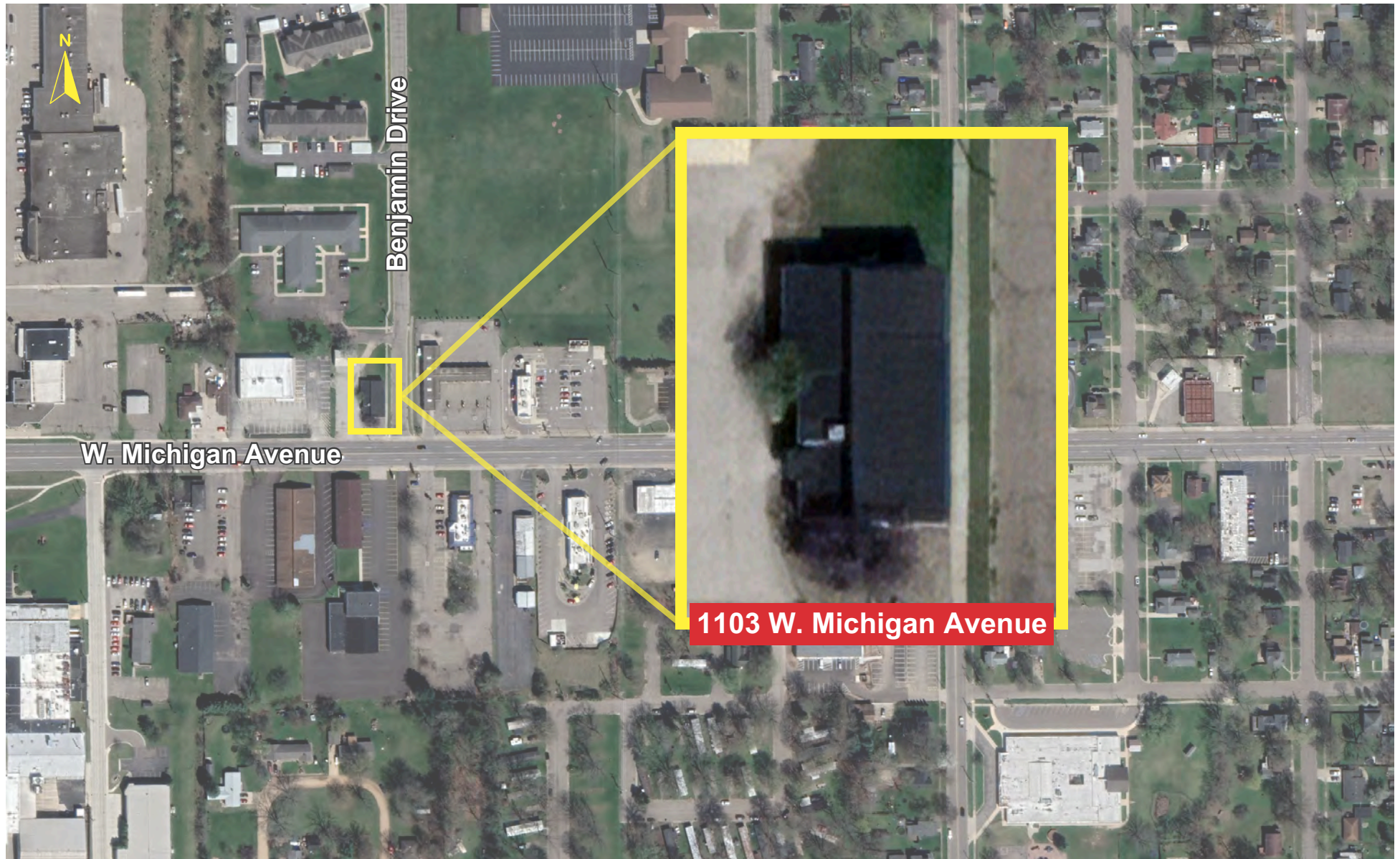
Property Description

This +/- 4,183 SF single-story building offers excellent visibility along W. Michigan Avenue in the heart of Three Rivers. Built in 1950 with pole/wood construction, the property features central air, forced HVAC, and public water/sewer. Situated on approximately 0.5 acres with 107' of road frontage, this B-2 zoned site is ideal for retail, office, or service-based businesses. Don't miss this versatile space in a prime location.

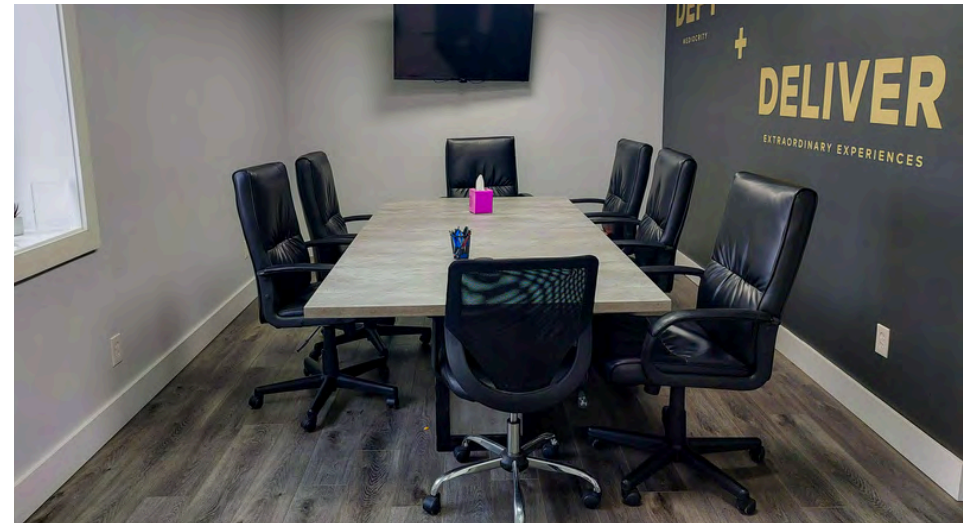
MAP VIEW



SITE AERIAL



INTERIOR



INTERIOR



OUR FULL RANGE OF SERVICES

- Real Estate & Development
- Transportation & Logistics
- Warehousing Services
- 3PL & Material Handling
- Heavy Machinery Moving & Rigging
- Cardboard, Paper & Pallet Recycling and Sales
- Landscape, Lawn Care & Snow Removal
- Semi Trailer & Container Rental and Sales
- Facility Cleaning
- Automotive Dunnage Washing



AUTHORIZED DEALER

New Trailers, Parts & Service





JAMIE CLARK

President
269.207.3081
jamie@clarklogic.com



MATT CONLEE

Director of Leasing & Development
574.333.5344
matt@clarklogic.com



TIM MONAHAN

Director of Development
269.861.9487
tim@clarklogic.com



SARAH HUBER

Manager of Leasing
850.687.4867
sarah@clarklogic.com

CORPORATE LOCATIONS

REAL ESTATE HEADQUARTERS

2314 Helen Avenue
Portage, MI 49002
269.323.0717

MILHAM HEADQUARTERS

3700 E. Milham Avenue
Portage, MI 49002
269.279.7405

KILGORE HEADQUARTERS

3801 E. Kilgore Road
Kalamazoo, MI 49001
269.279.7405

